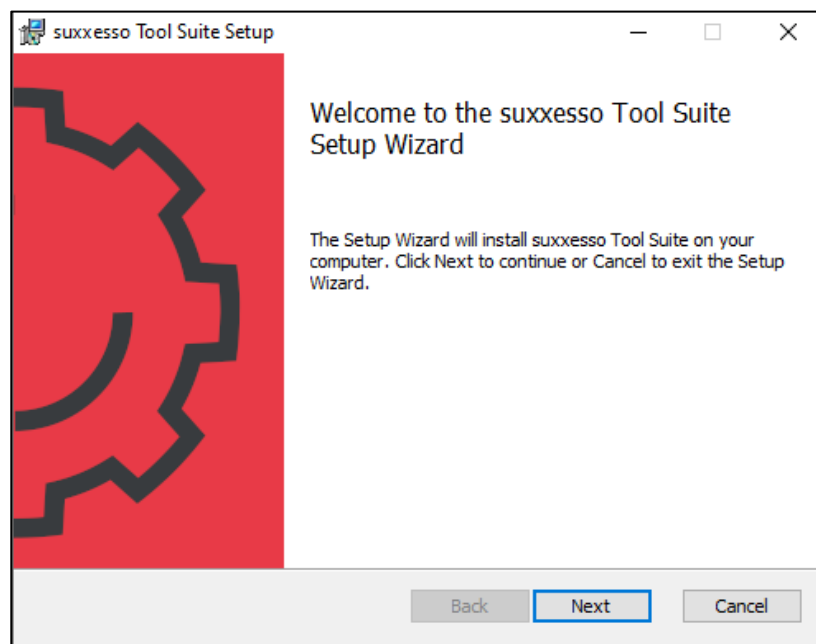


INSTALLATION GUIDE

Installation suxxesso Tool Suite



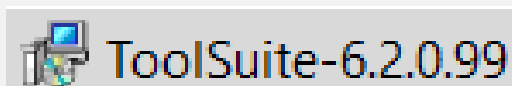
Important information when updating the suxxesso Tool Suite:

Uninstall the current version of suxxesso Tool Suite on your device before updating to the new version. All settings in the suxxesso Tool Suite, such as workspaces or connections, are taken over and do not have to be created again.

Open the Tool Suite-X.X.X.XXX installation file.

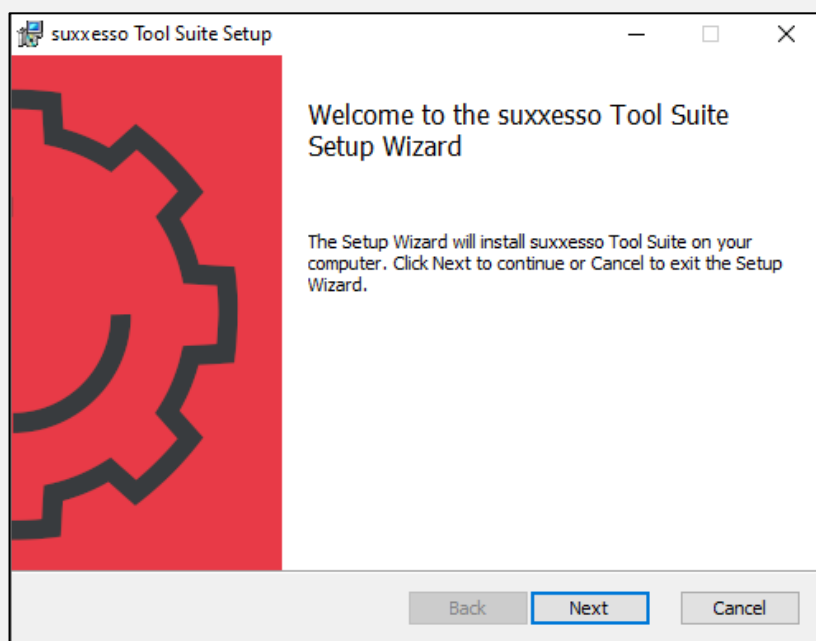
In order to carry out the installation successfully, follow the steps below:

1



Click on the „Next“ button to proceed with the installation.

2



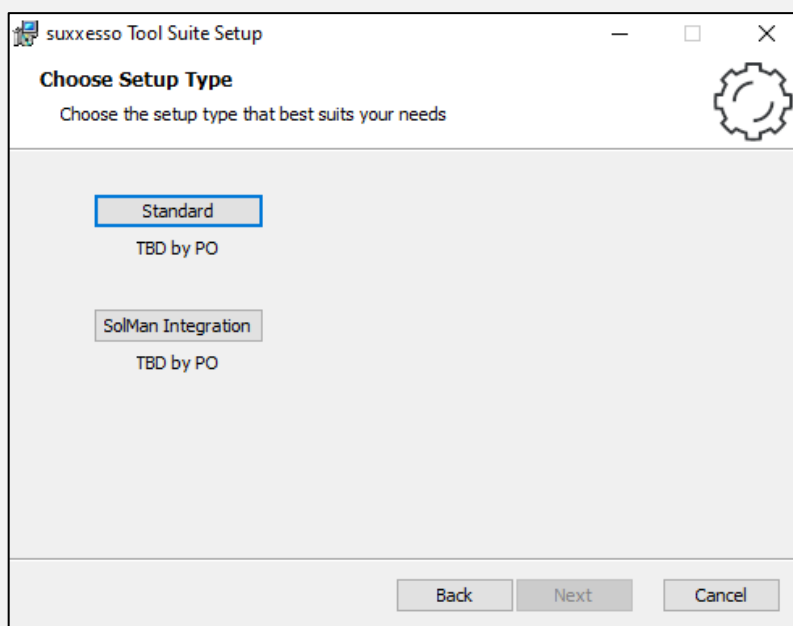
In the next window you can choose between two different options for installation:

- Standard, or
- SolMan Integration

If you do not use or have a connection to SAP Solution Manager, select „Standard“.

After you have made your choice, click on the „Next“ button, in order to proceed to the next window.

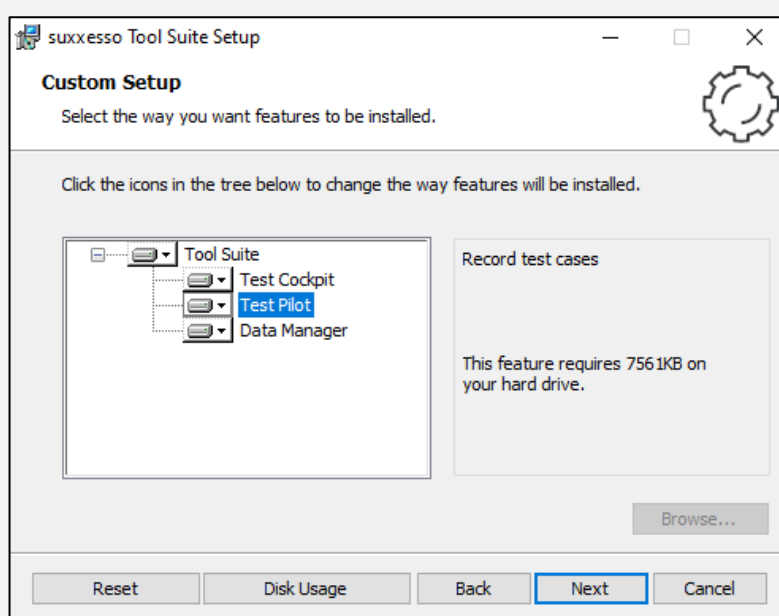
3



In this window you can choose your personal preferences for the installation of each application of the suxxesso Tool Suite (suxxesso Test Pilot, suxxesso Test Cockpit und suxxesso Data Manager).

You can confirm your choices by clicking the „Next“ button.

4



Finalize the installation by clicking the „Install“ button.

5

